

# ***Brindley's Grand Cross***



***Of the 18th Century links,  
with the River Mersey in  
the north, Liverpool and  
Manchester; with in the  
South Oxford and then the  
River Thames to London;  
with in the west Worcester  
and then the River Severn to  
Bristol; with in the north-  
east the River Trent  
Nottingham and then to  
the Humber and also the  
Roman Fossdyke Canal to  
Lincoln and the  
River Witham to the Wash***

# ***The Grand Canal at Wuxi in China***





# ***The Grand Canal at Wuxi in China***



# ***The Grand Canal at Wuxi in China***





***From Torksey Lock looking up the Roman  
Fossdyke Canal towards Lincoln c. 1900***



# ***Fossdyke Canal from Lincoln***

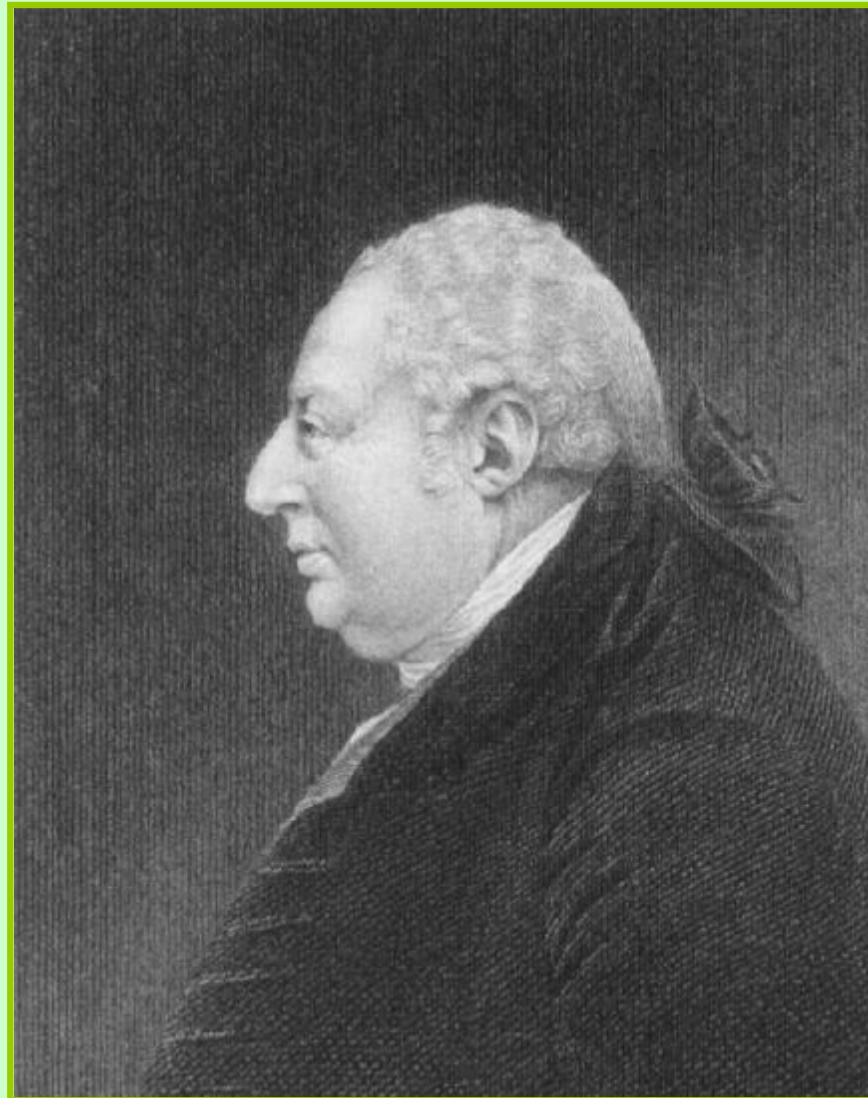




# ***Fosdyke Canal from Lincoln***

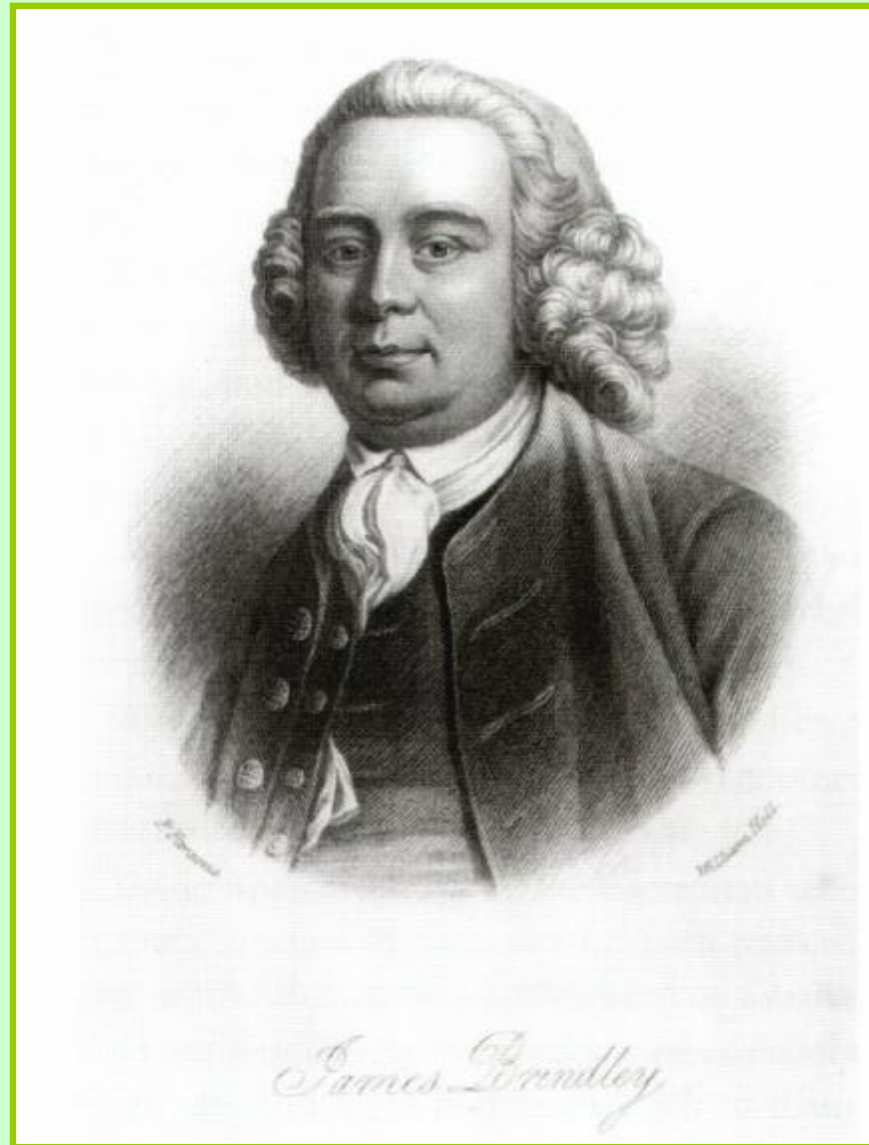


***Francis Egerton, the Third Duke of Bridgewater  
in his later days (1736 – 1803)***

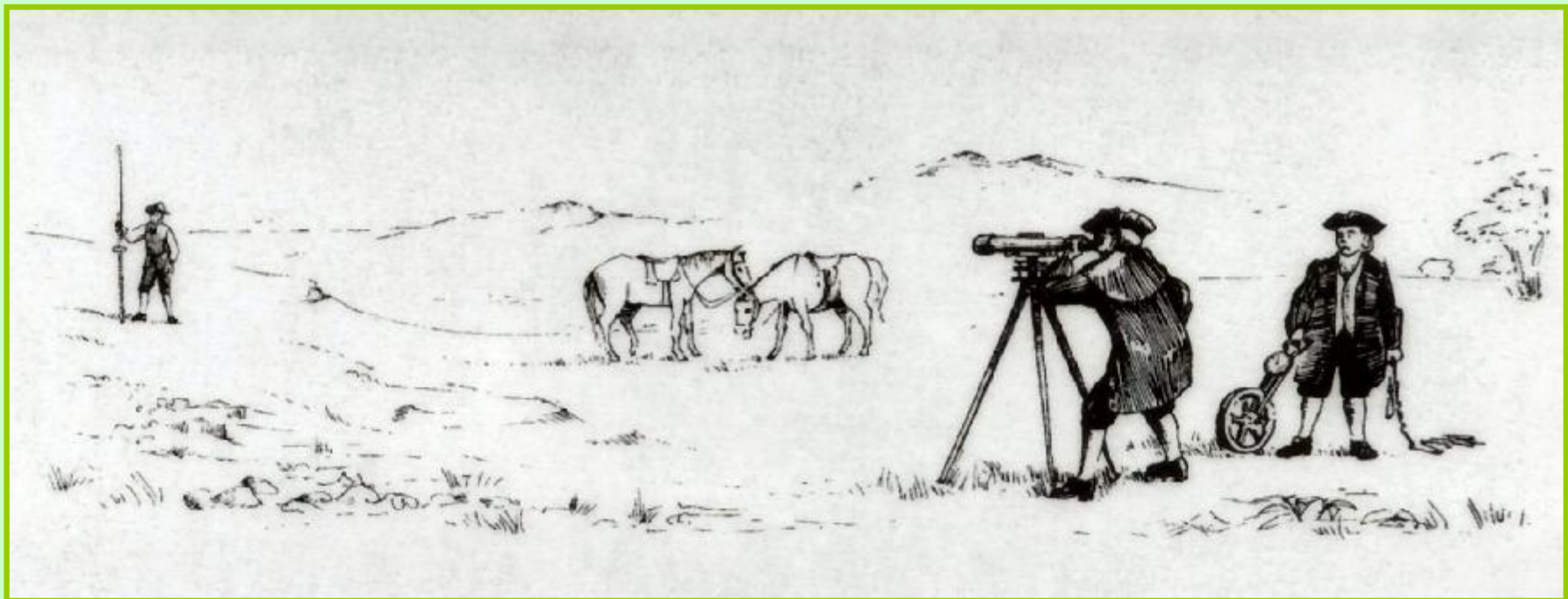




# ***James Brindley (1716 –1772)***



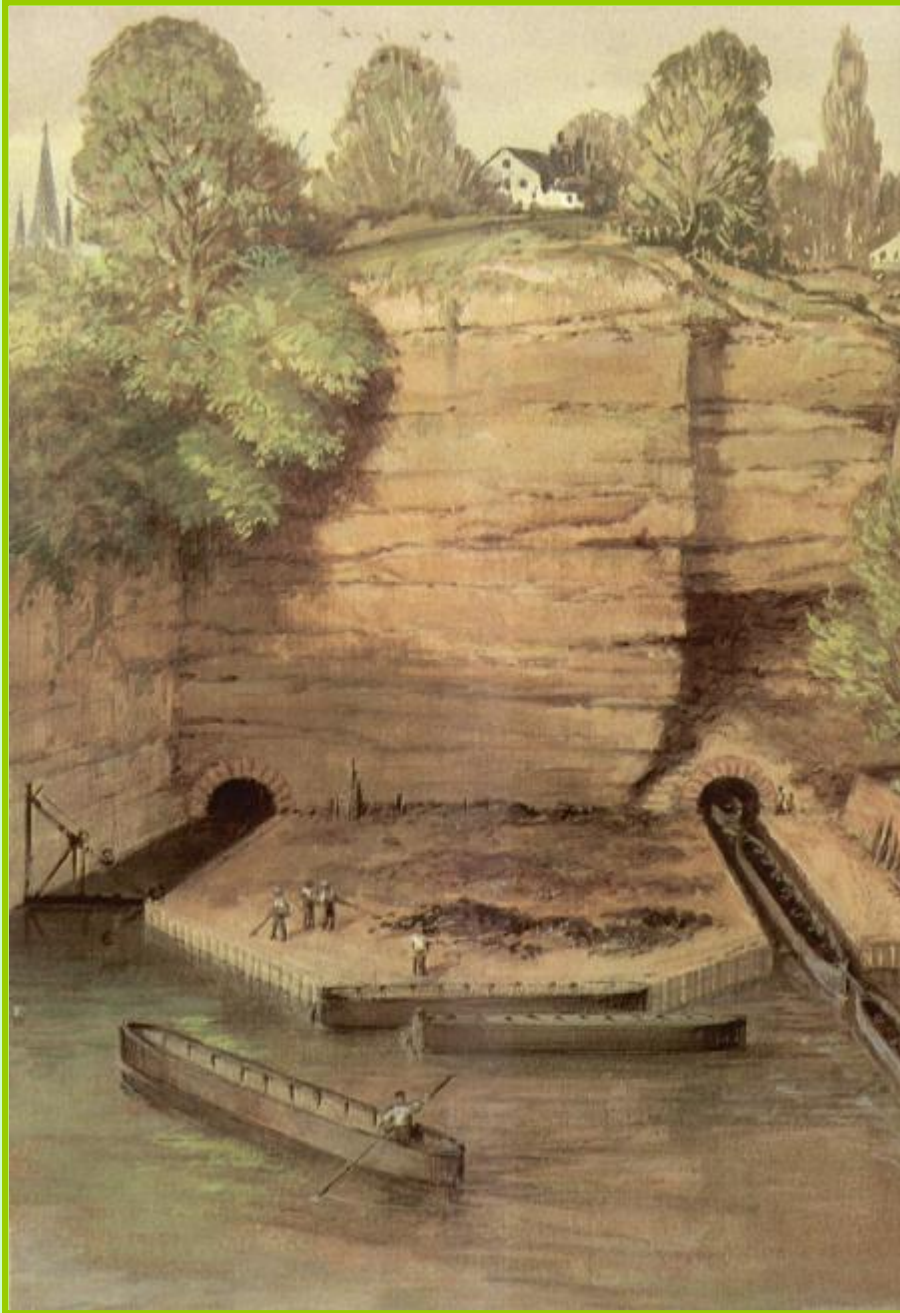
# ***Canal surveying***





# ***Barton Aqueduct over the River Irewell***





***The Worsley  
Mine  
Entrance***



# ***The decaying workings outside the Worsley mine***

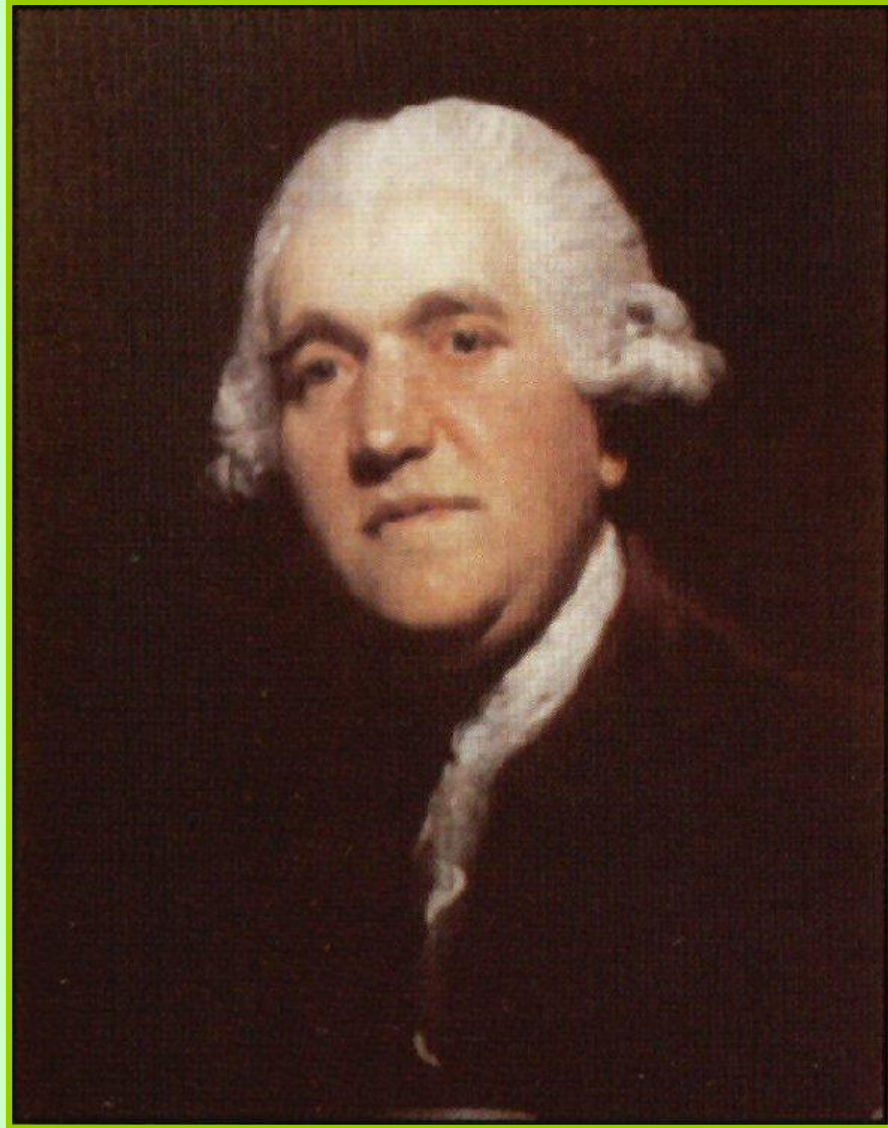


***Men with brazier in the limestone mine  
at the Black Country Museum***

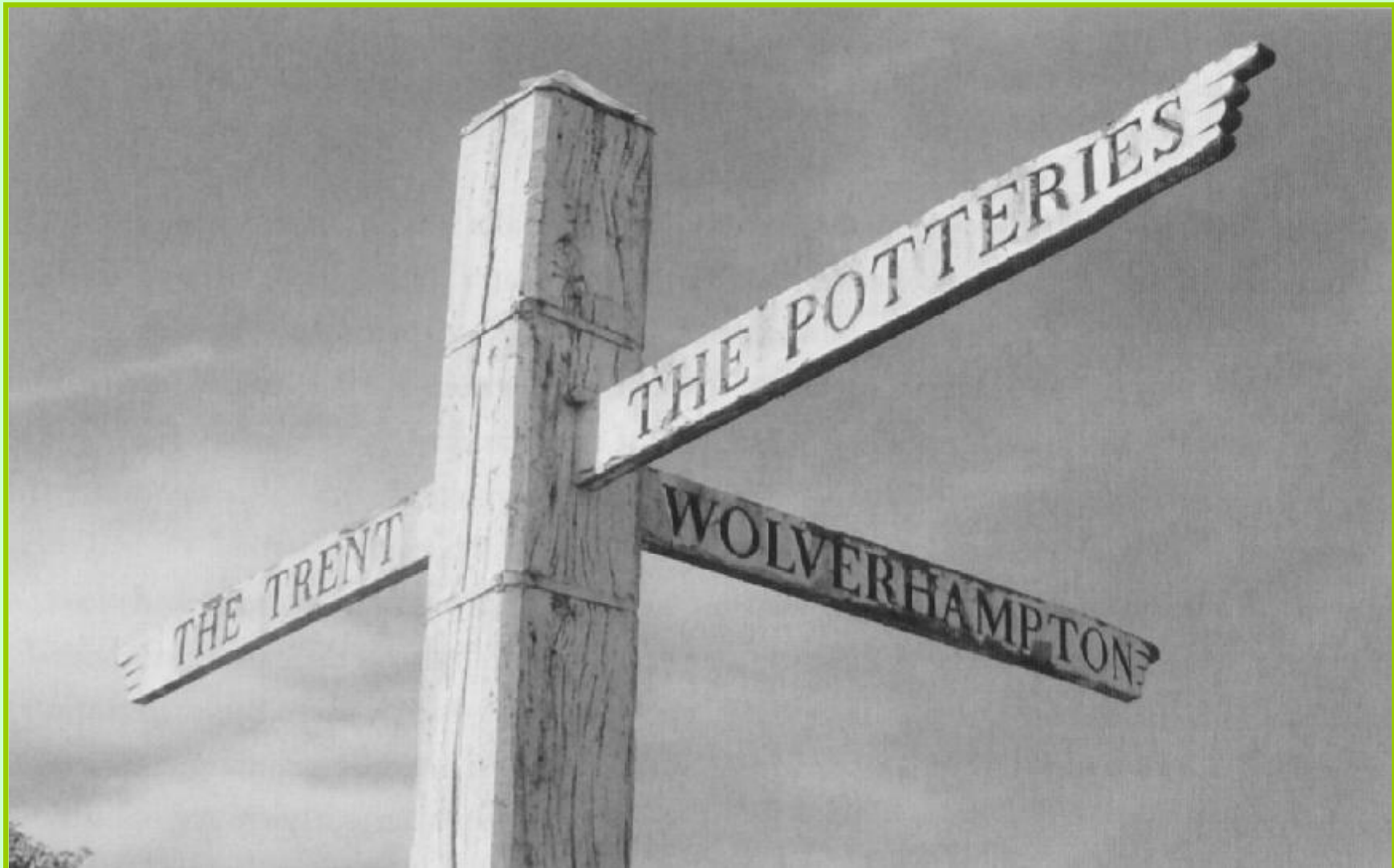




# ***Josiah Wedgwood (1730 – 1795)***



***The sign post at Haywood Junction shows just how great Brindley's plan was for the canals***



# ***Brindley's Grand Cross***

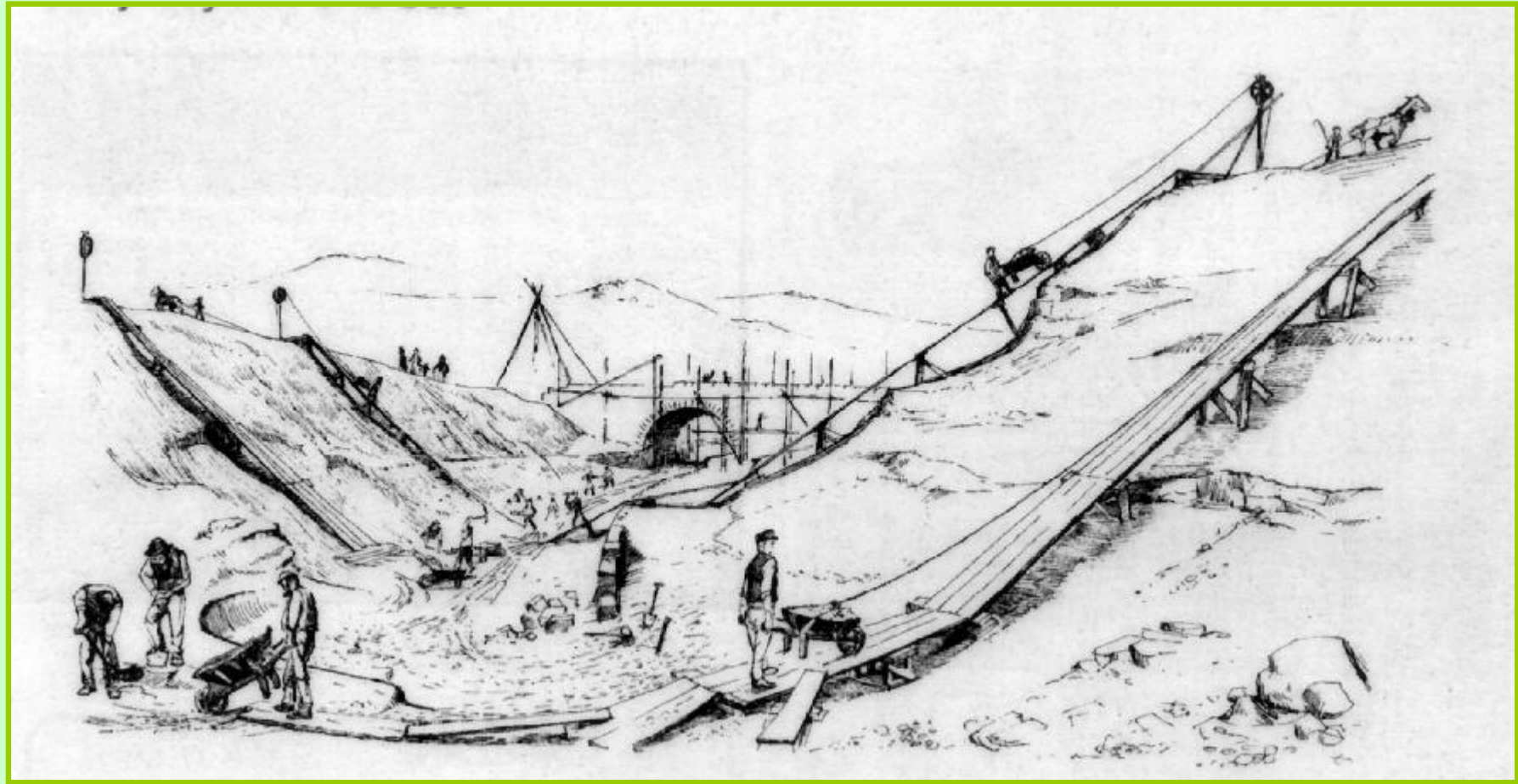




***Coaching House – now The Wolseley Arms, where the first  
share-holders meeting was held 30th December 1765***



# ***Digging a canal – mainly with picks, spades and barrows***





***Brindley's tunnel is barely visible to-day  
at the Harecastle's southern portal***





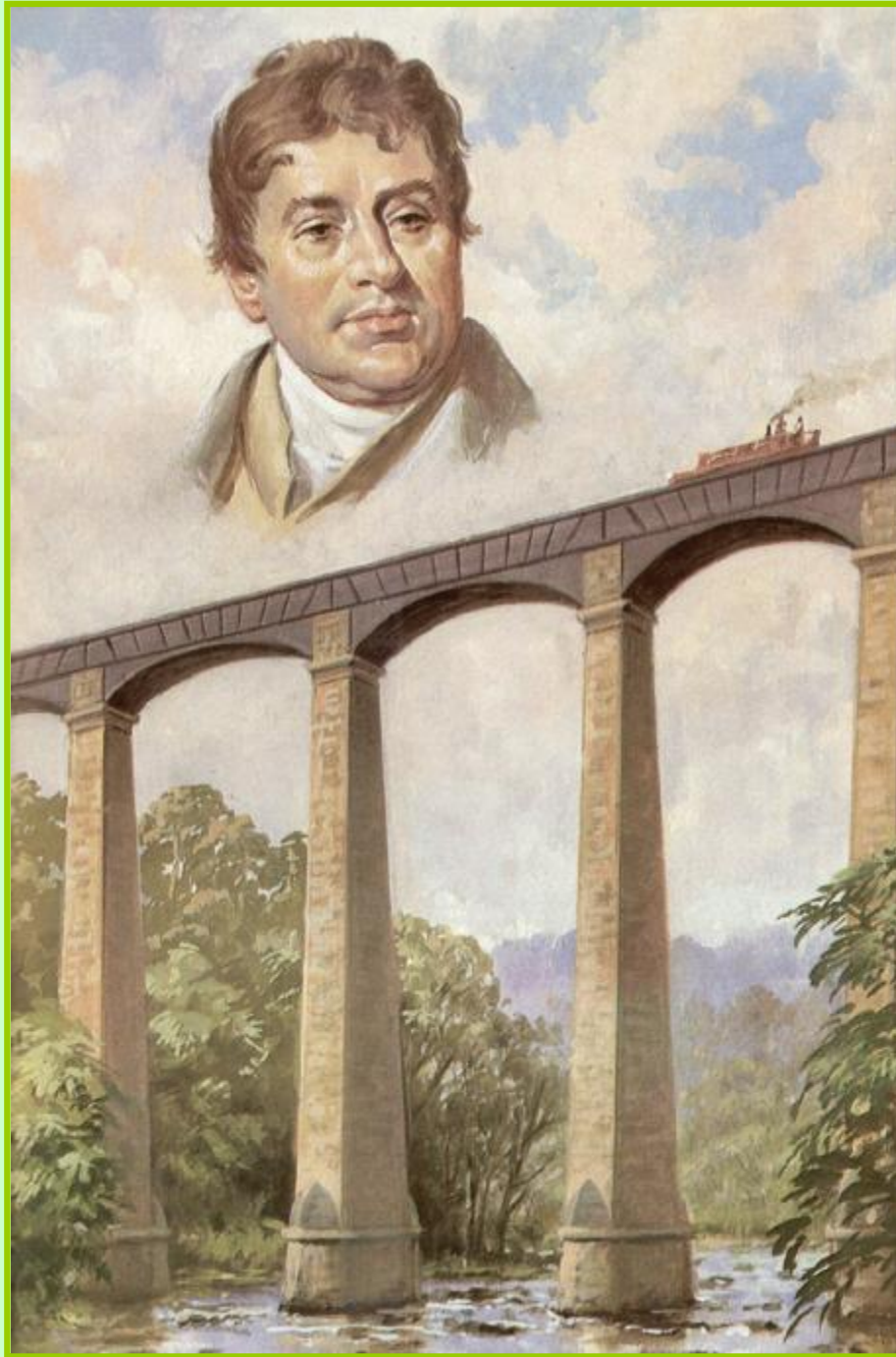
# ***Legging through a tunnel***





# ***Learning to leg through a tunnel at the Black Country museum***



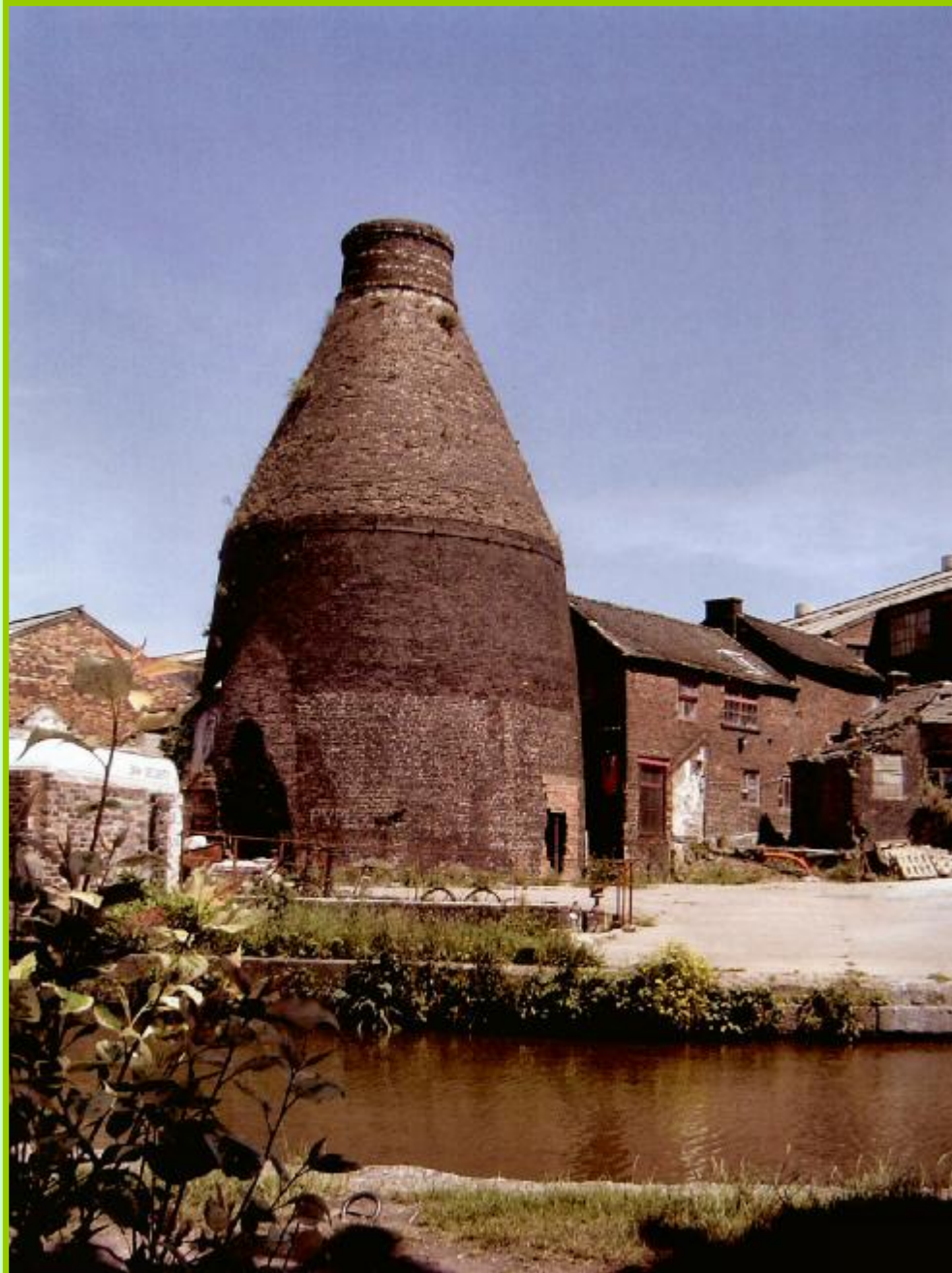


***Thomas Telford  
(1757-1834)***



# ***The southern end of Telford's Harecastle Tunnel***

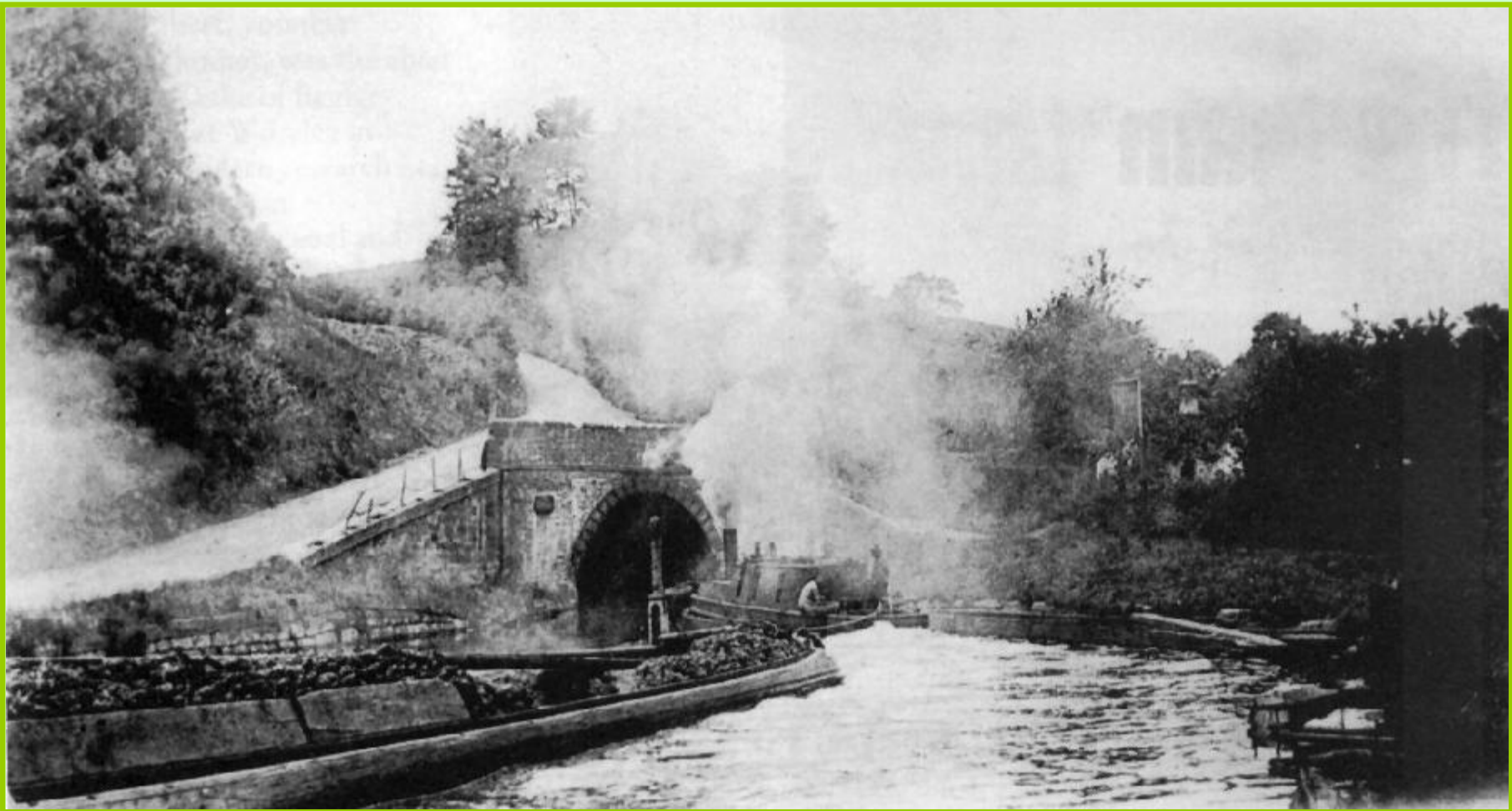




***Bottle kiln  
at the potteries***

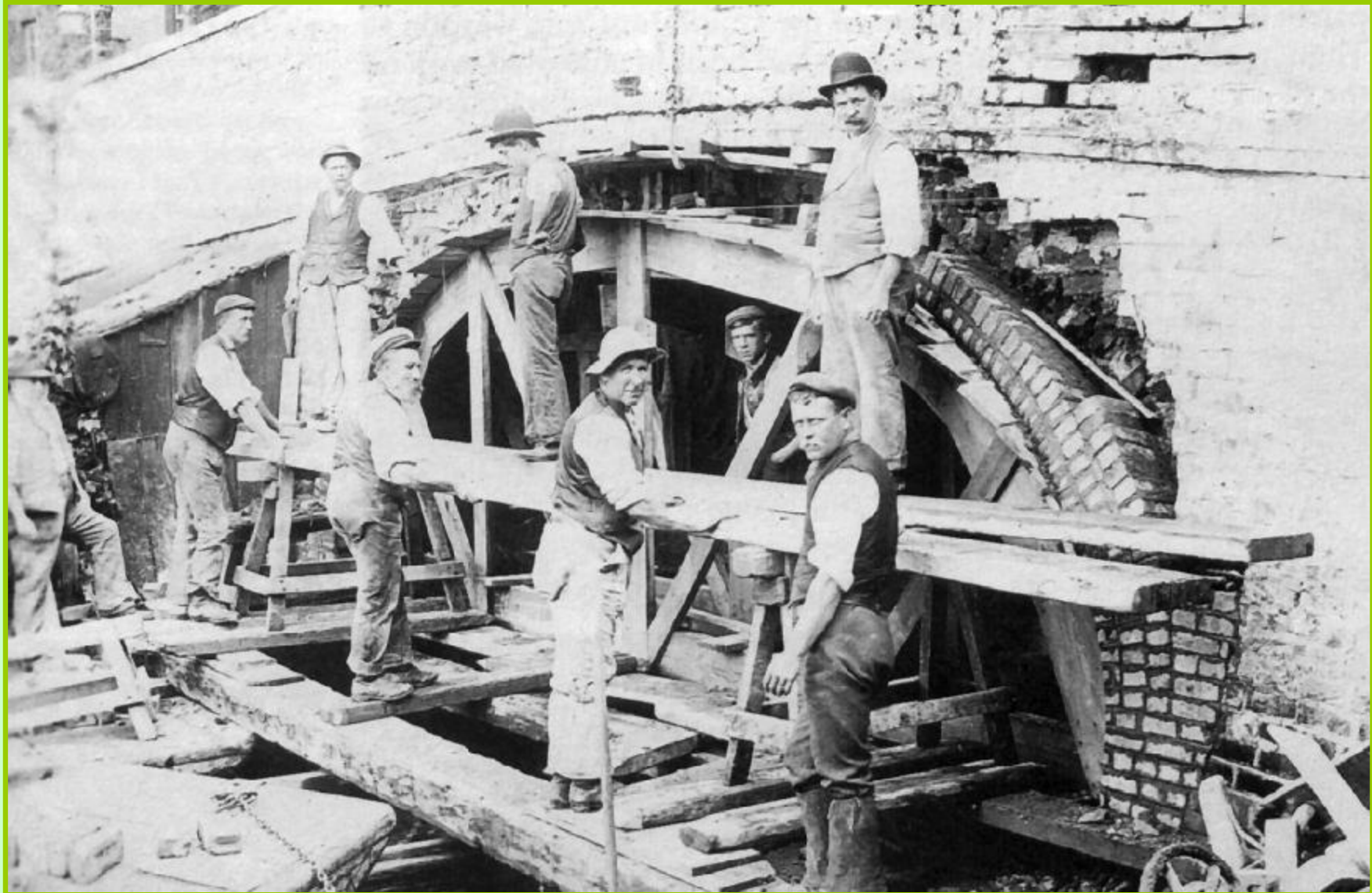


***Saltersford Tunnel in Cheshire in 1910.  
It is 424 yards***

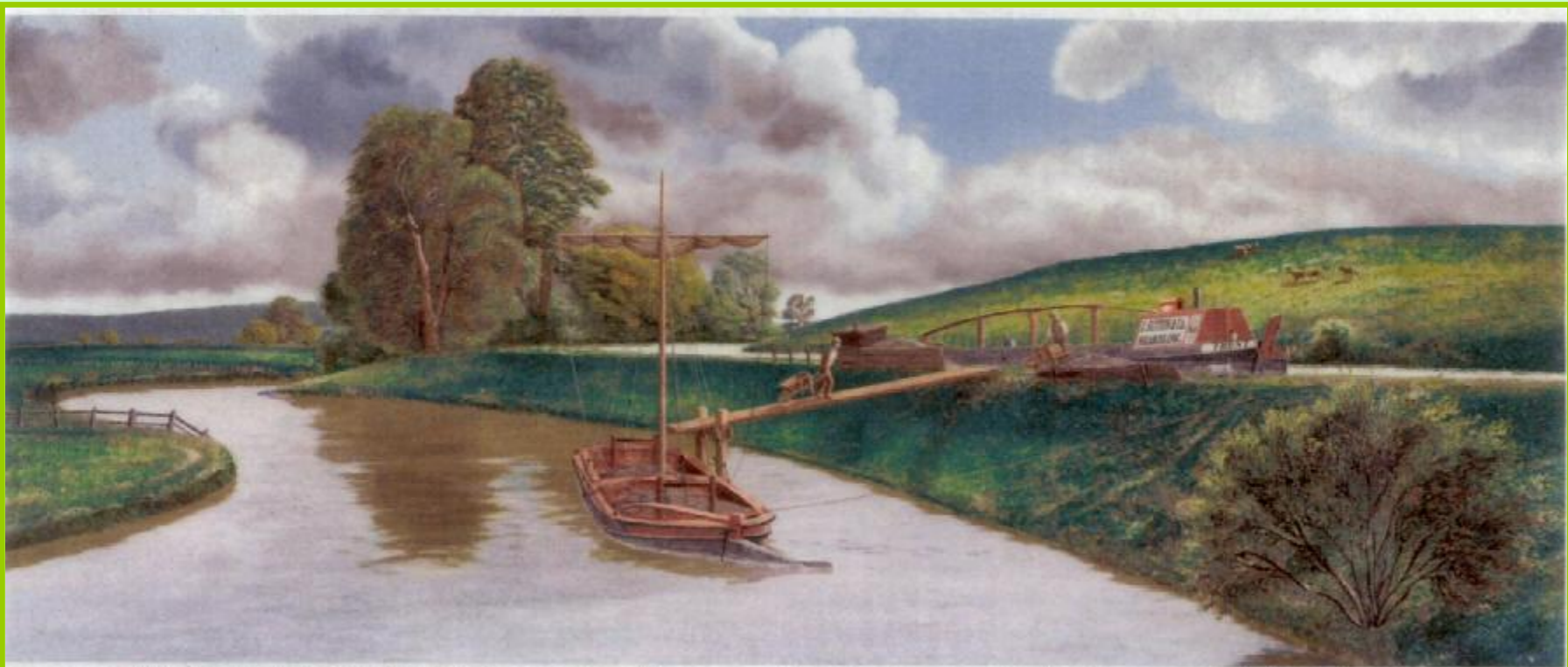




***A wooden former is being used in a bridge repair at Watford in 1904***



# ***Artist's impression of the Flint Wharf at Colton***



A reconstructed view of flints being transhipped from a canal boat to a barge on the river Trent at Brindley's Bank for delivery to Colton Mill c1830. The level of the river was several feet higher in the 19th century than it is nowadays.



# ***Rugeley Aqueduct over the River Trent***

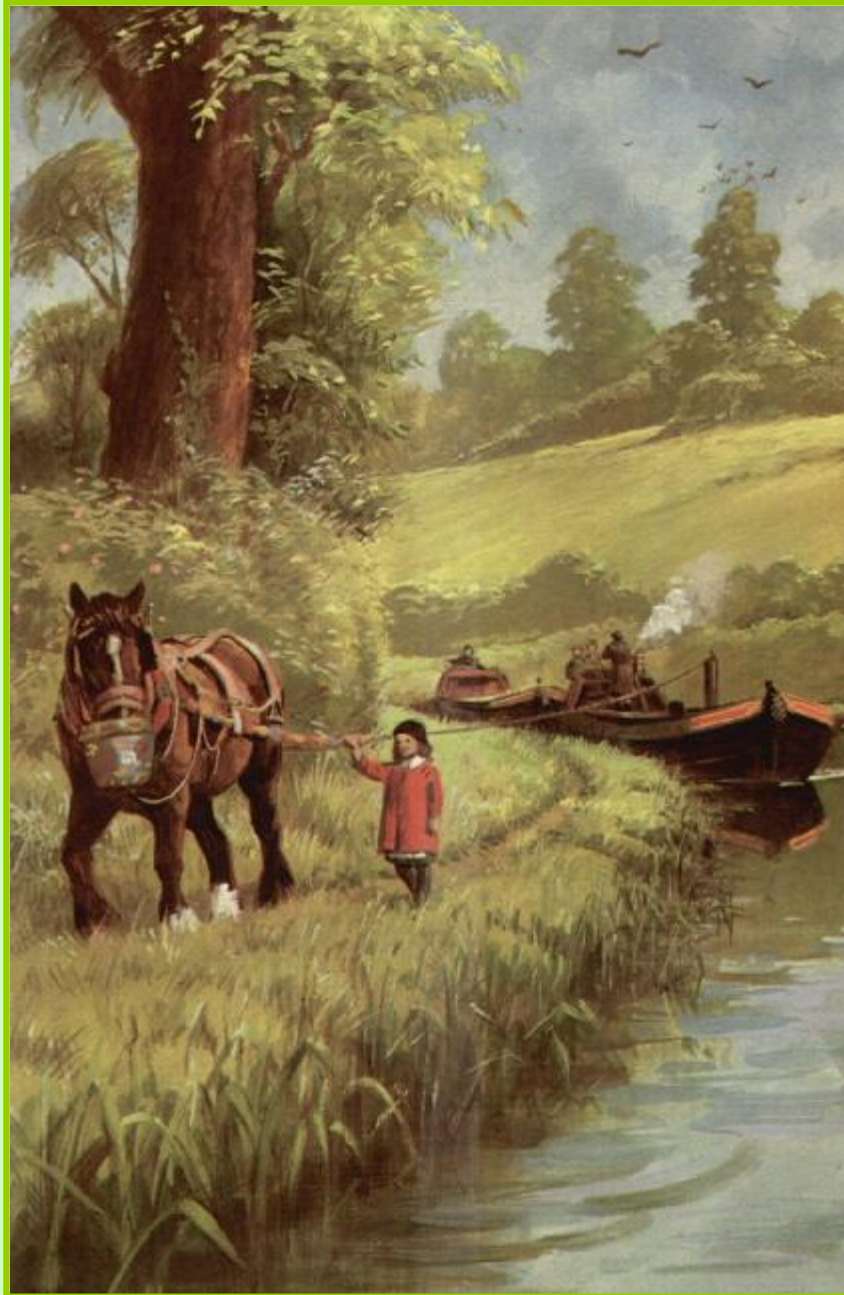




# ***Milepost at Colton***







***Imagine that you  
are this child***

## ***Bridge 68 – Colton turn-over bridge***





# ***Colton Winding Hole***



# ***Wharf Cottage, Colton***





***Bridge 69***  
***Taft Bridge is an accommodation bridge***





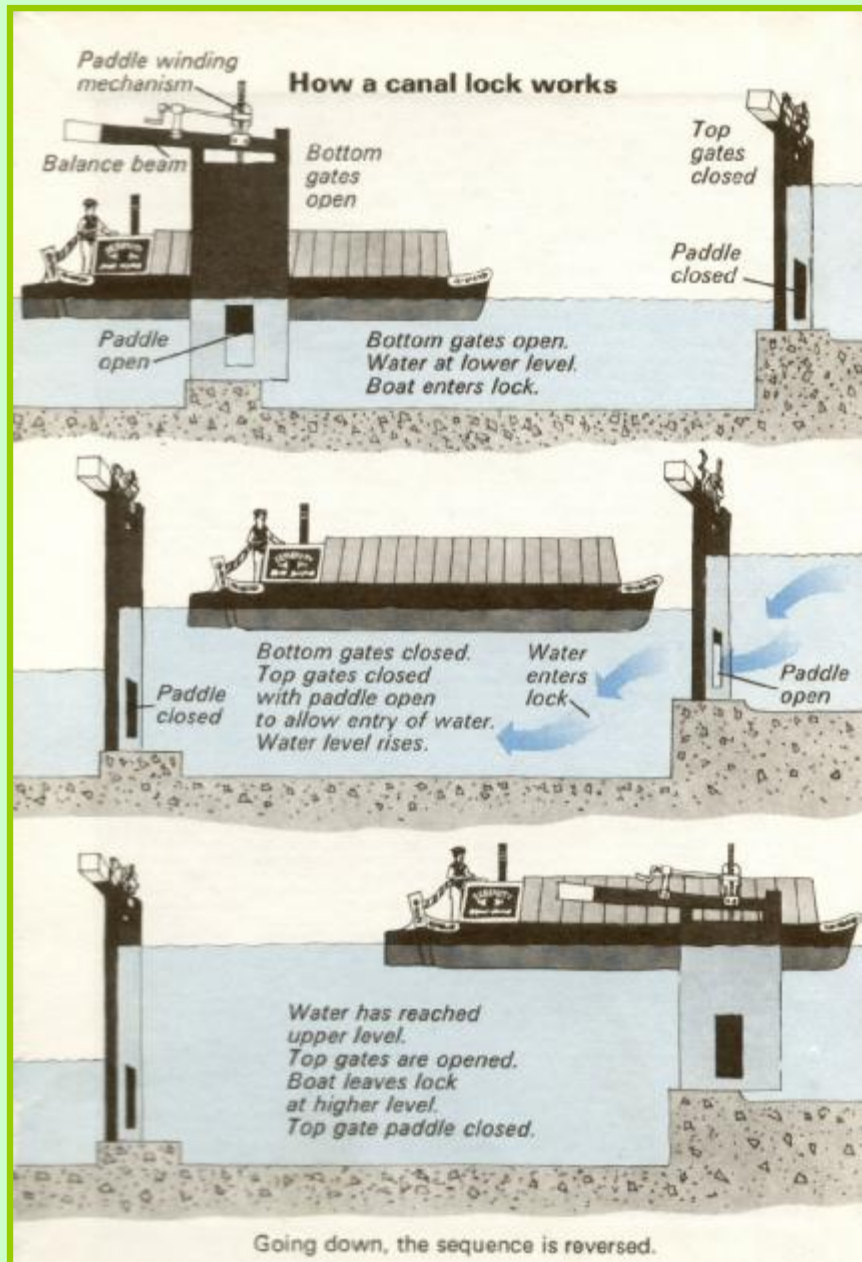
***Spillway opposite Bishton Hall with the canal on the left and the river far right***





# ***Colwich Lock raises the level by 6'6"***





***How to  
work a lock***



***Shugborough Carriage Bridge – the road continued over  
another bridge over the river to Shugborough Hall***





# ***Bridge 73 - Haywood Bridge & Lock***

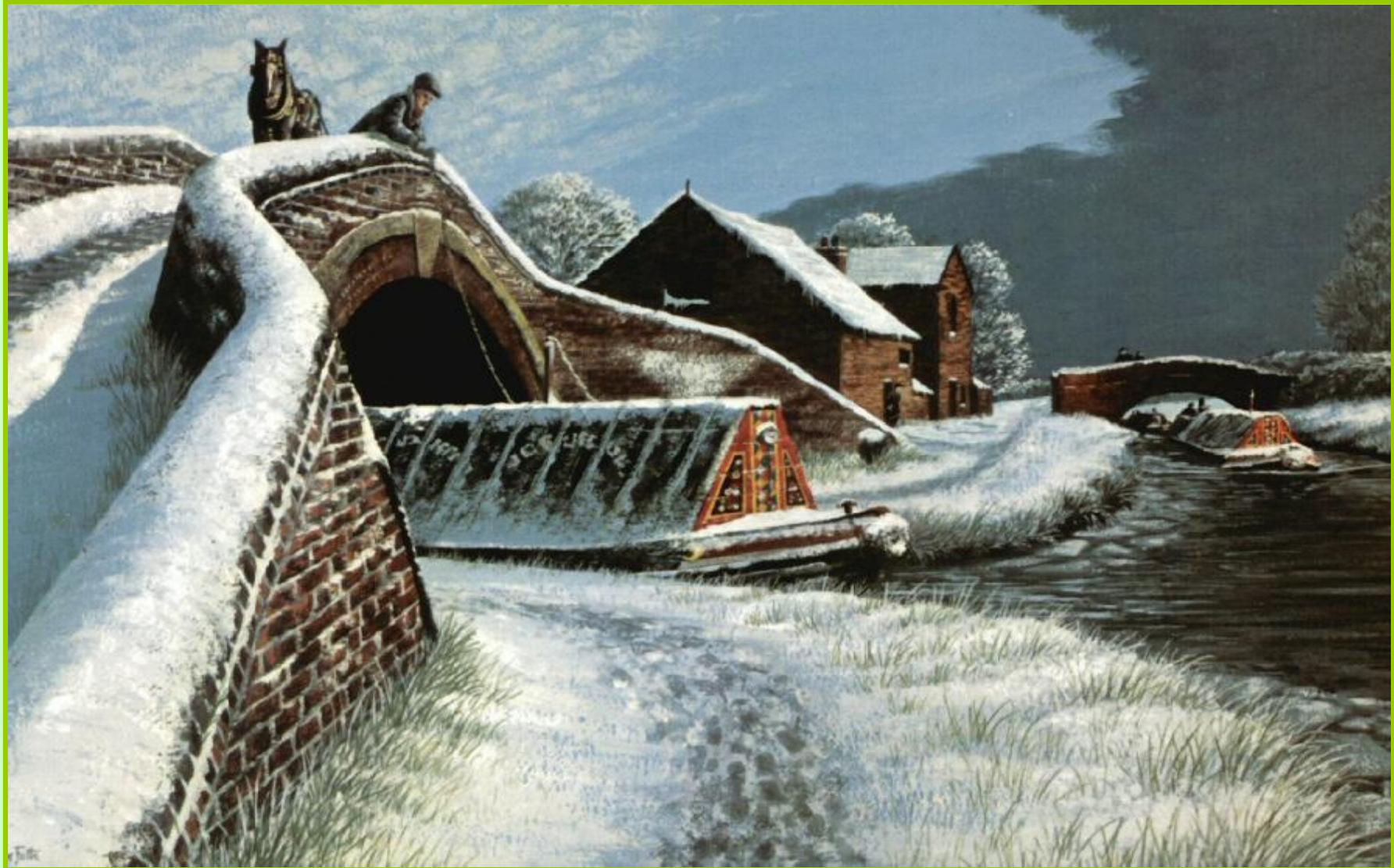




***The blacksmith (H. Beck) shoeing a horse  
belonging to the Oxford Canal Company in 1922***



# ***Wintertime at Haywood Roving Bridge***





# ***Toll House at Great Haywood***



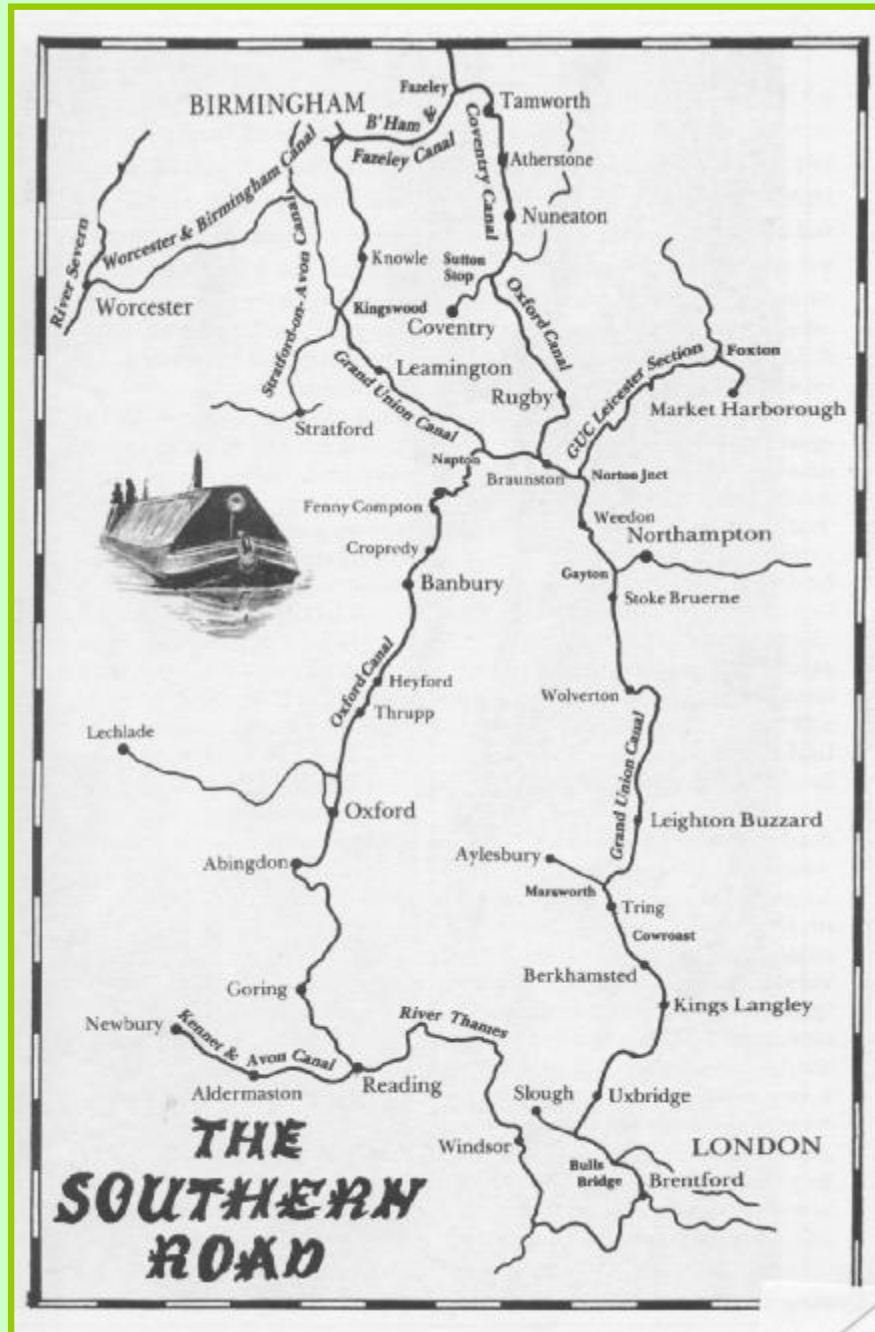


**FRADLEY JUNCTION:** Where once working boats tied, pleasure boats now moor on the Trent & Mersey Canal. The Swan and its associated buildings have changed remarkably little over the years.



## ***Fradley Junction past & present***





# ***The Southern Road***



# *The Northern Road*



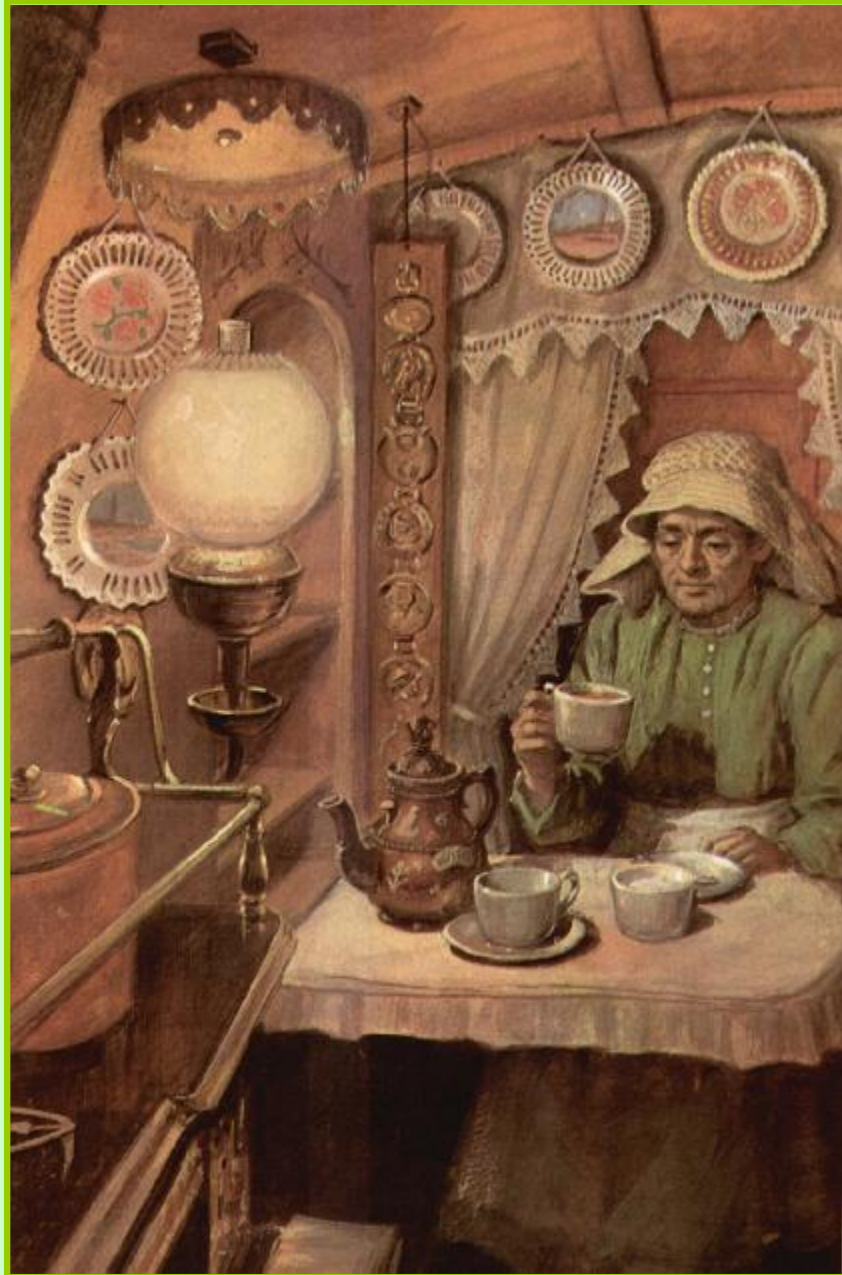
***The monkey boat is in the centre with its cabin & the butty is on the left, note that the elum arm is pointing upwards, as the boat is moored***





***A boathorse with his  
feed can, large wooden  
beads and crocheted  
earcaps to keep the  
flies off***





***A boatwoman in  
her 8' by 6' 6" cabin***

# ***Costume of a boatwoman***







***A wooden ice-breaking  
Boat with men rocking  
the boat, whilst a team  
of horses tries to drag  
it through the ice***

# *The Inland Waterways of England & Wales*

