

Colton History Society

Occupations in Colton in the Early 20th Century



Based on the Census of 1901

Colton History Society

Occupations in Colton in the Early 20th Century

Overall Employment

Population	760*
------------	------

Employed Males	244
----------------	-----

Employed Females	67
------------------	----

M = 78.5% of total employed

F = 21.5% of total employed

*incl. detached parts of Colwich

Colton History Society

Occupations in Colton in the Early 20th Century

Agriculture 1

Farmers (M)	14
Farmer (F)	1
Farmers' Sons (workers)	4
Farmers' Daughters (workers)	4
Farm Bailiff	1
Cattlemen	17
Stock-keeper	1

Colton History Society

Occupations in Colton in the Early 20th Century

Agriculture 2

Carters on Farm	5
Waggoners on Farm	8
Horsemen on Farm	2
Teamster on Farm	1
Agricultural Labourers	12
Farm Labourers	11
Farmyard Labourers	6

Colton History Society

Occupations in Colton in the Early 20th Century

Agriculture 3

Farm Servants	7
Agricultural Pupils (M)	2
Ploughboys on Farm	2
Shepherds	3
Total (96 M 5 F)	101

Agriculture represents 32.5% of total employment

Colton History Society

Occupations in Colton in the Early 20th Century

Technology in the Fields



Colton History Society

Occupations in Colton in the Early 20th Century

Transport

15 males, including carter

2 railway carters,

2 carters for provision merchants, carter for flourmill.

They represent 6.2% of male employment.

(excl. “non-transporting” railway workers)

Colton History Society

Occupations in Colton in the Early 20th Century



Dominant Form Of Transport

Colton History Society

Occupations in Colton in the Early 20th Century

Service 1

Domestic Servants (F)	1
Housemaids (domestic)	8
Housemaids	1
Laundrymaid (domestic)	1
General Servants (F domestic)	16
General Domestics/Charwomen	3
Cooks (domestic)	3

Colton History Society

Occupations in Colton in the Early 20th Century

Service 2

Parlour maids (domestic)	3
Cook/Housekeepers	4
Housekeepers (domestic)	4
Companion (F)	1
Lady's Maid (domestic)	1
Lady's Maid	1
Kitchen Maid	1

Colton History Society

Occupations in Colton in the Early 20th Century



Colton History Society

Occupations in Colton in the Early 20th Century

Service 3

Total Females in Service 48

These represent 71.6% of female employment

Total Males in Service 18

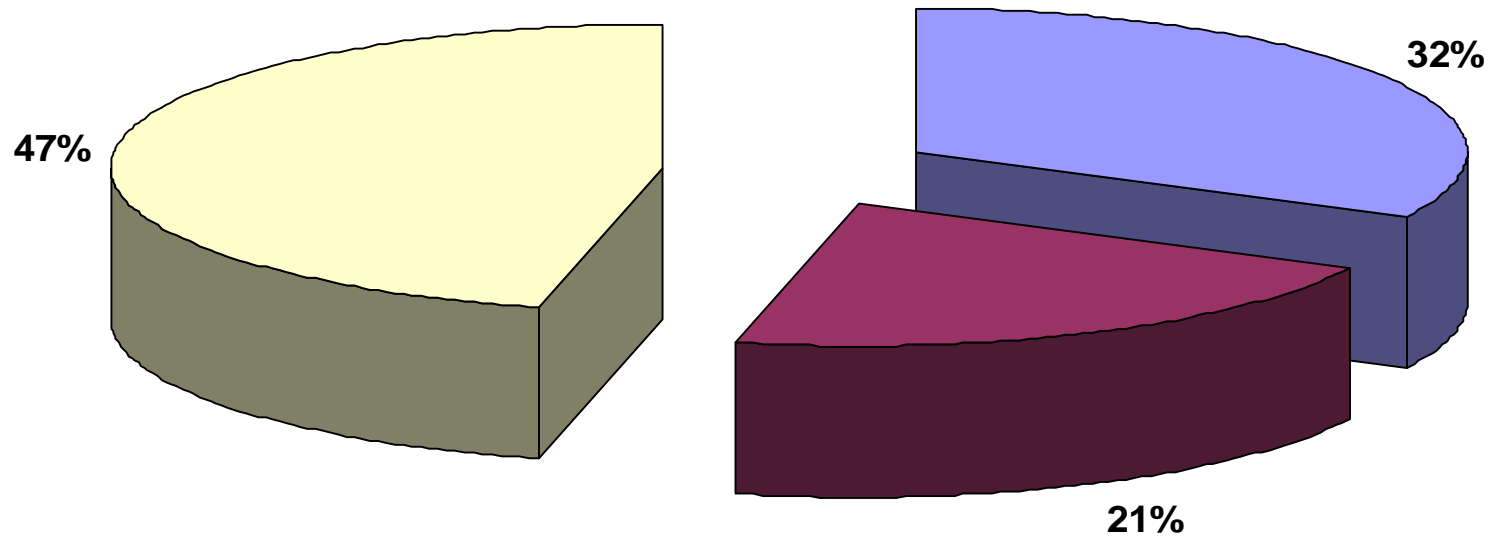
These represent 7.4% of male employment

They include: 2 butlers (1 domestic), 1 page (domestic),
2 footmen (domestic) and 3 grooms (not domestic),
1 kennel man

Service represents 21.2% of total employment

Occupations In Colton. 1

Percentage per Employment Sector



Total Number 311

■ Agriculture ■ Service ■ Others

Colton History Society

Occupations in Colton in the Early 20th Century

Crafts 1

Blacksmiths	4
Blacksmith's Apprentice	1
Wheelwright's Apprentice	1
Carpenters	5
Joiner	1
Cordwainer	1

Colton History Society

Occupations in Colton in the Early 20th Century

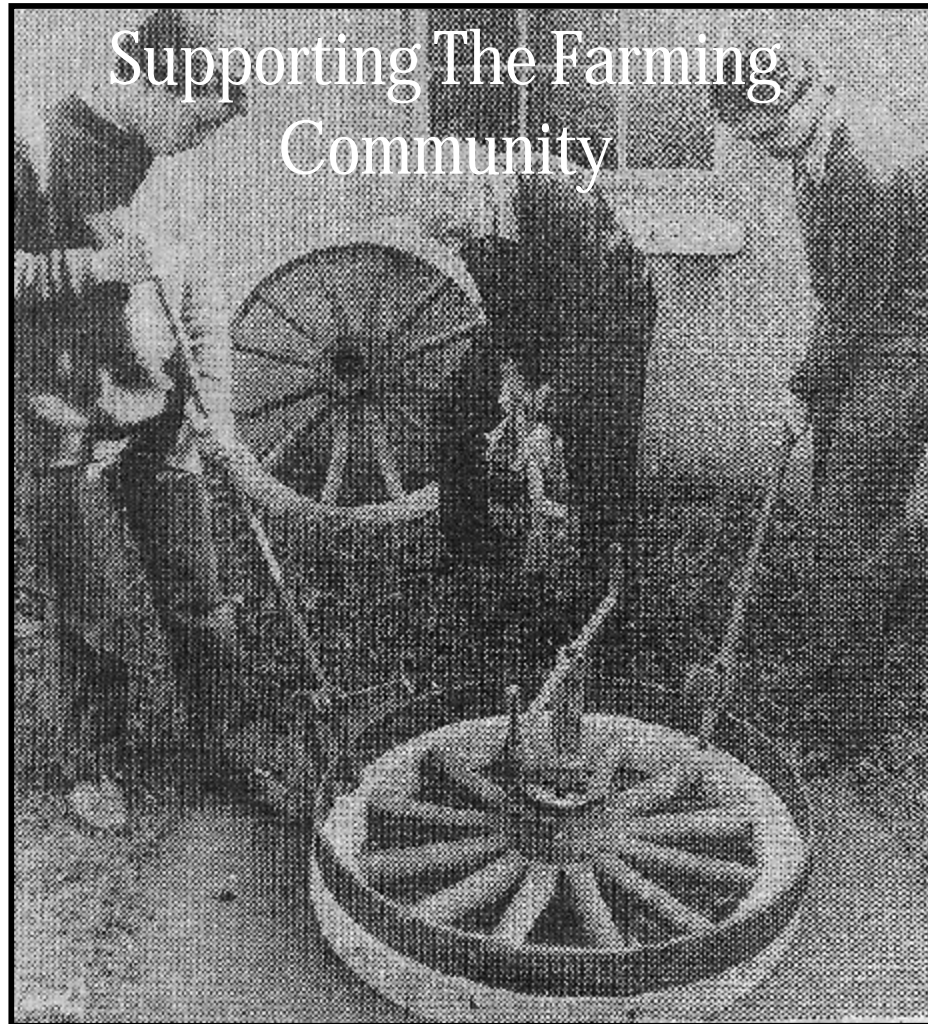
Crafts 2

Dressmaker (F, own account)	3
Dressmaker	1
Total	17

These represent 5.5% of total employment

Colton History Society

Occupations in Colton in the Early 20th Century



Colton History Society

Occupations in Colton in the Early 20th Century

Railway & Related 1

Navvies on Railway	3
Goods Porter	1
Railway Carters	2
Signalmen	5
Clerks, Goods Office	3
Shunters	2
Ganger	1

Colton History Society

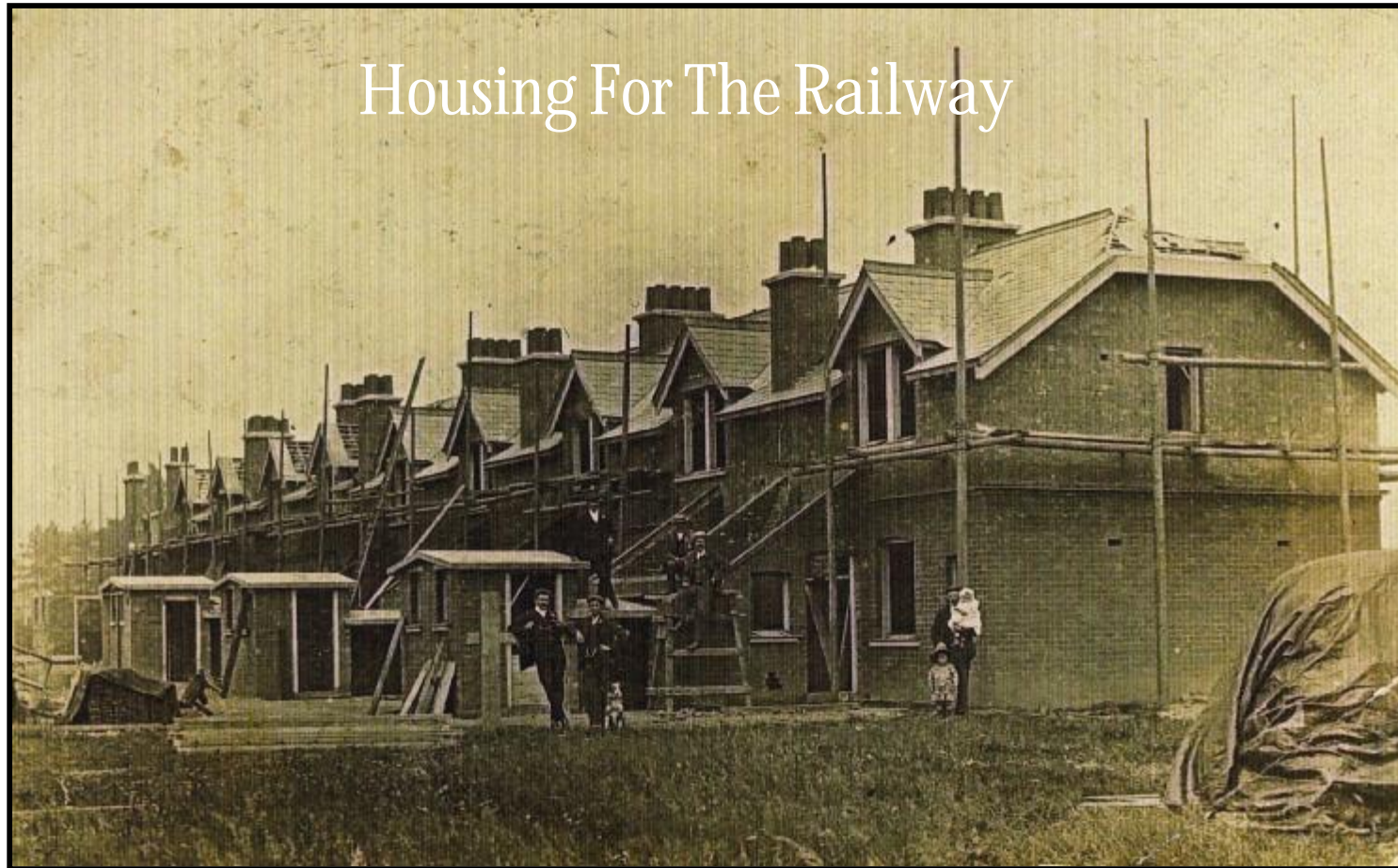
Occupations in Colton in the Early 20th Century

Railway & Related 2

Railway Workers/ Labourers	3
Foreman Platelayer	1
Railway Canal Warehouseman	1
Bricklayers on Railway	4
Porters	6
Total	31 (M)

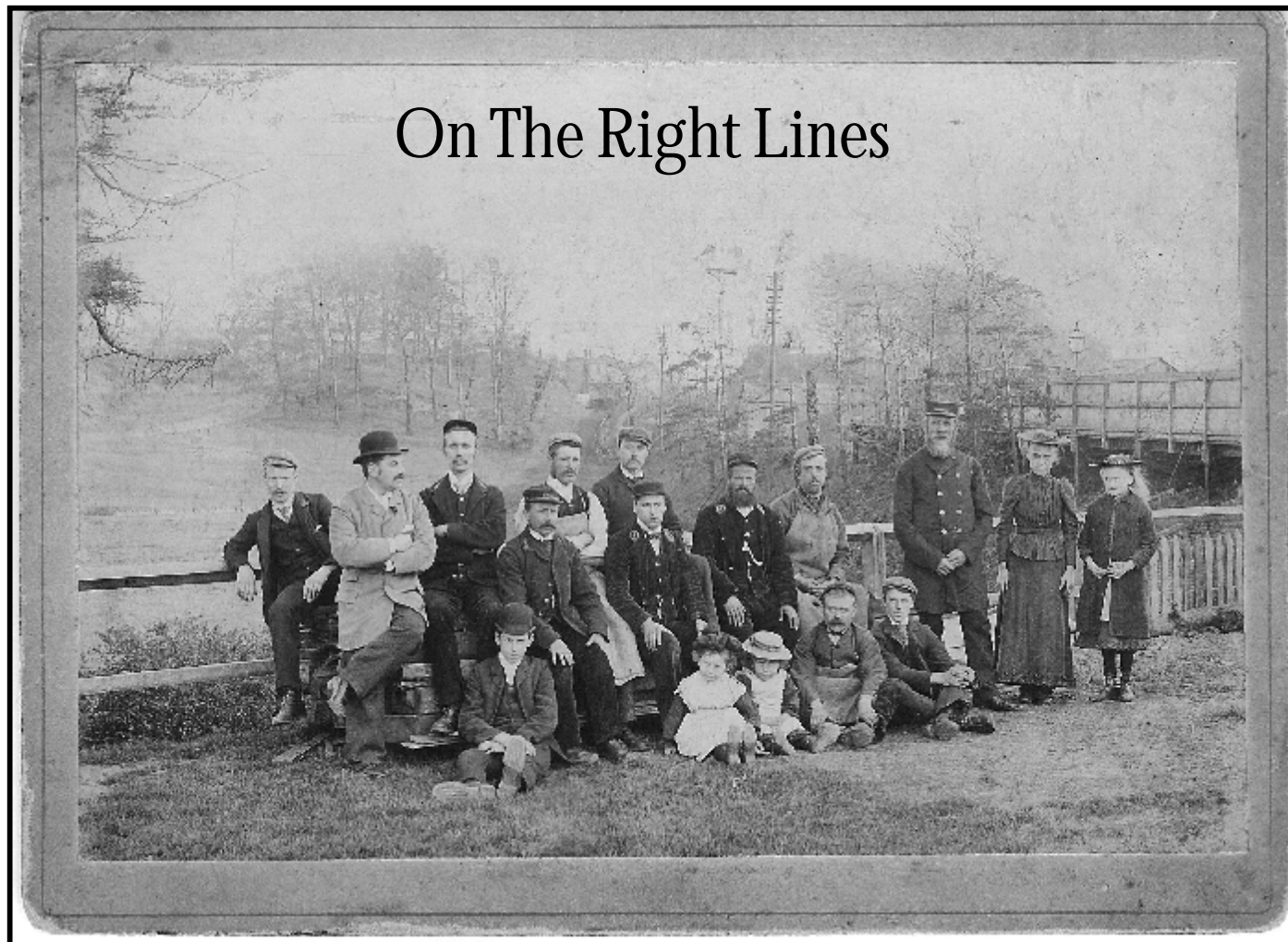
Colton History Society

Occupations in Colton in the Early 20th Century



Colton History Society

Occupations in Colton in the Early 20th Century



Colton History Society

Occupations in Colton in the Early 20th Century

Tannery

13 males, as follows:

Tanners Labourers	11
Flesher	1
Scudder	1

Colton History Society

Occupations in Colton in the Early 20th Century



Colton History Society

Occupations in Colton in the Early 20th Century

Industry, inc. Tannery & (some) Railway

68 Males, including:

Fireman at Colour Works	1
Packer at Paint Mills	1
Burner at Colour Mills	1?
General Labourers	6

These represent 21.9% of total employment

Colton History Society

Occupations in Colton in the Early 20th Century

Trades/Commerce

20 Males, 3 Females, including:

Milkmen	2
Laundress (own account)	1
Laundresses (workers)	2
Butchers	5
Butcher's Assistants	2
Butcher's Slaughterman	1
Builder's Merchant	1
Publican/Innkeepers	2
Beerhouse Shopkeeper	1

These represent 8% of the total employment

Colton History Society

Occupations in Colton in the Early 20th Century

Some Others

Clerical, 5 Males, 2.3% of total employment

Professional 4 Males, 6 Females, including:

1 Certificated Elementary Schoolmaster

1 Schoolmistress

1 Assistant Teacher, 1 Pupil Teacher (F)

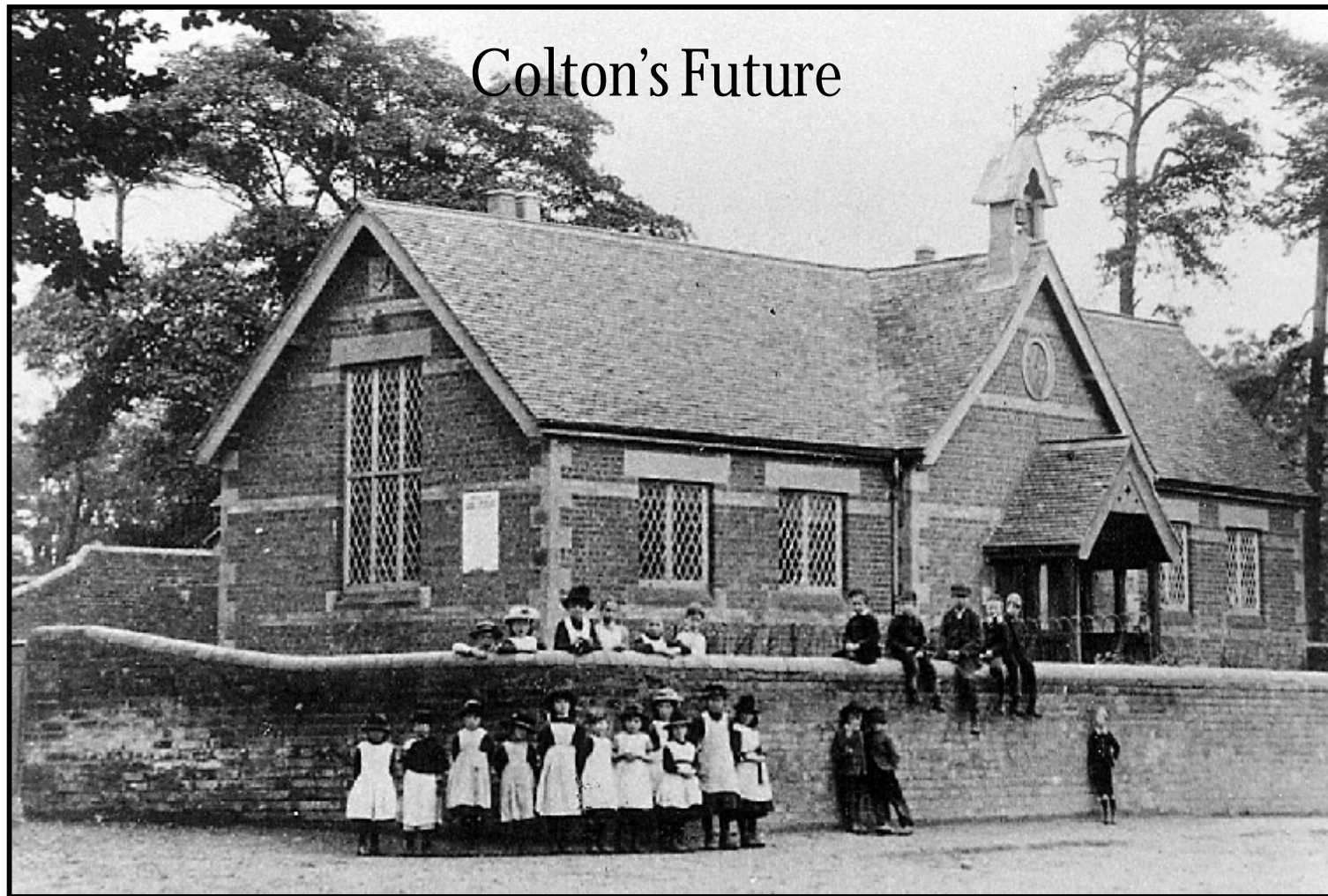
1 Actor

1 Actress

These represent 3.2% of total employment

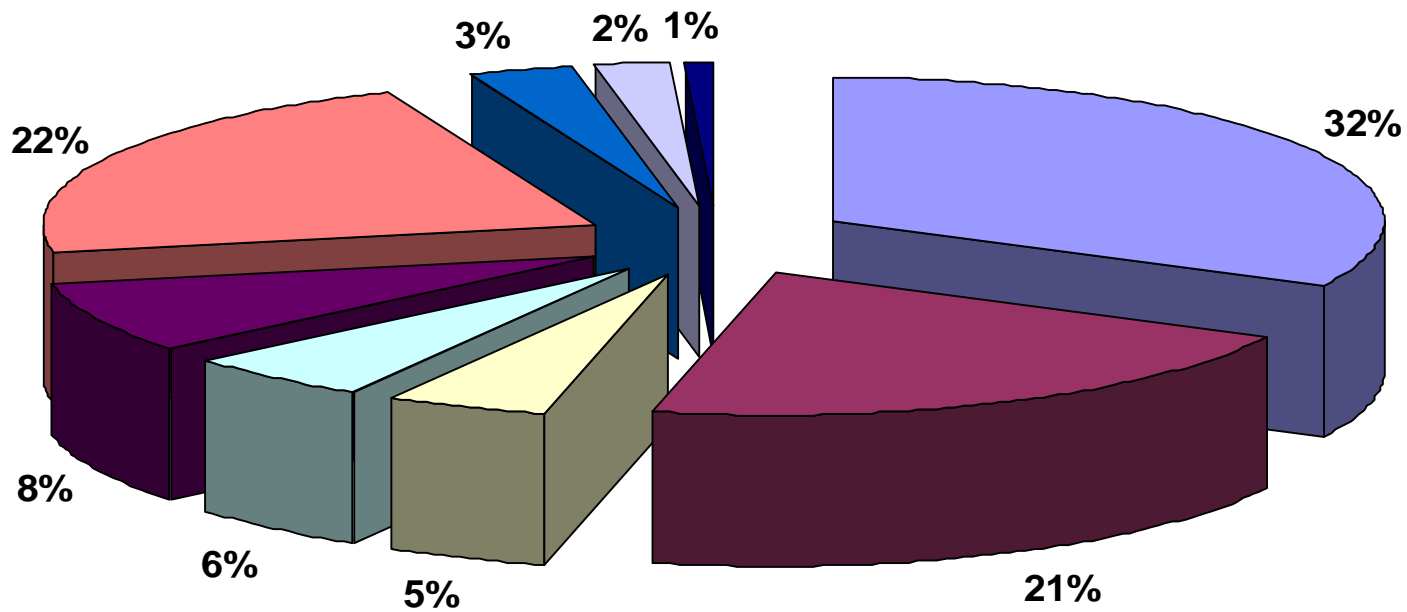
Colton History Society

Occupations in Colton in the Early 20th Century



Occupations In Colton. 2

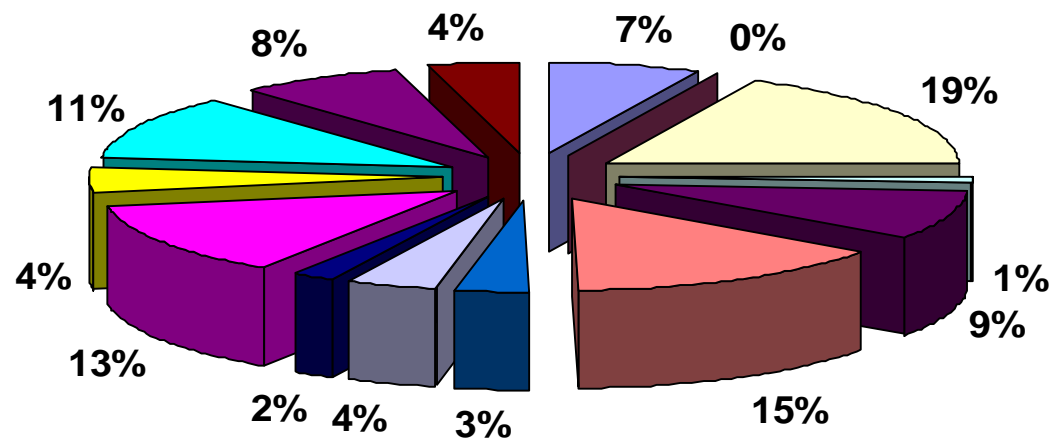
Percentage per Employment Sector



Agriculture Service Transport Crafts Trades/Commerce Industry Professions Clerical Others

Occupations In Colton. 3. 2001

Industry & Employment Age 16 to 74 years.



Source 2001 Census

- | | |
|--|---|
| ■ Agric./Hunt/Forestry | ■ Mining/Quarrying |
| ■ Manufacturing | ■ Utilities |
| ■ Construction | ■ Wholesale retail, motor repair |
| ■ Hotel/catering | ■ Transport/Storage/Comms. |
| ■ Financial Interim | ■ Real Estate/renting/Bus |
| ■ Public Admin/Defence | ■ Educn. (inc 31 FT students) |
| ■ Health/SW | ■ Other |

Colton History Society

Occupations in Colton in the Early 20th Century

